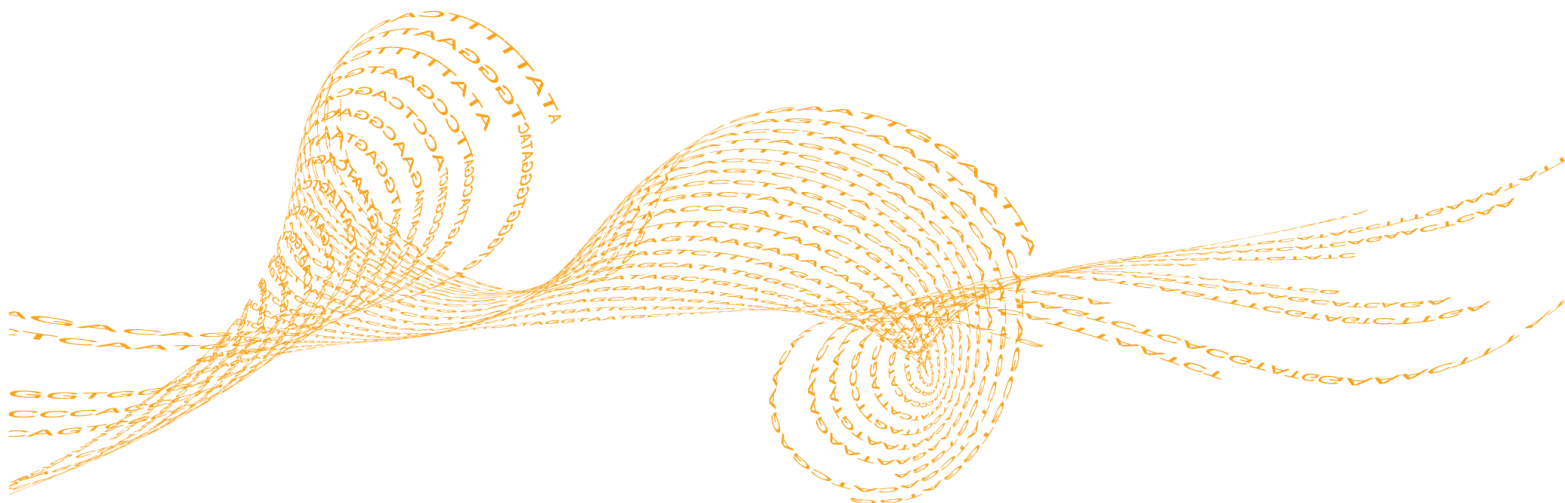


Eco Software v3.0

Upgrade Instructions

FOR RESEARCH USE ONLY

Introduction	3
Downloading the Eco Software	4
Upgrading the Eco Software	5
Disabling the McAfee Firewall	9
Technical Assistance	



This document and its contents are proprietary to Illumina, Inc. and its affiliates ("Illumina"), and are intended solely for the contractual use of its customer in connection with the use of the product(s) described herein and for no other purpose. This document and its contents shall not be used or distributed for any other purpose and/or otherwise communicated, disclosed, or reproduced in any way whatsoever without the prior written consent of Illumina. Illumina does not convey any license under its patent, trademark, copyright, or common-law rights nor similar rights of any third parties by this document.

The instructions in this document must be strictly and explicitly followed by qualified and properly trained personnel in order to ensure the proper and safe use of the product(s) described herein. All of the contents of this document must be fully read and understood prior to using such product(s).

FAILURE TO COMPLETELY READ AND EXPLICITLY FOLLOW ALL OF THE INSTRUCTIONS CONTAINED HEREIN MAY RESULT IN DAMAGE TO THE PRODUCT(S), INJURY TO PERSONS, INCLUDING TO USERS OR OTHERS, AND DAMAGE TO OTHER PROPERTY.

ILLUMINA DOES NOT ASSUME ANY LIABILITY ARISING OUT OF THE IMPROPER USE OF THE PRODUCT(S) DESCRIBED HEREIN (INCLUDING PARTS THEREOF OR SOFTWARE) OR ANY USE OF SUCH PRODUCT(S) OUTSIDE THE SCOPE OF THE EXPRESS WRITTEN LICENSES OR PERMISSIONS GRANTED BY ILLUMINA IN CONNECTION WITH CUSTOMER'S ACQUISITION OF SUCH PRODUCT(S).

FOR RESEARCH USE ONLY

© 2011 Illumina, Inc. All rights reserved.

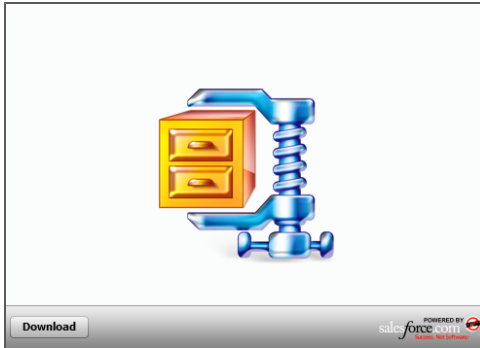
Illumina, illuminaDx, Solexa, Making Sense Out of Life, Oligator, Sentrix, GoldenGate, GoldenGate Indexing, DASL, BeadArray, Array of Arrays, Infinium, BeadXpress, VeraCode, IntelliHyb, iSelect, CSPro, GenomeStudio, Genetic Energy, HiSeq, HiScan, Eco, and TruSeq are registered trademarks or trademarks of Illumina, Inc. All other brands and names contained herein are the property of their respective owners.

Introduction

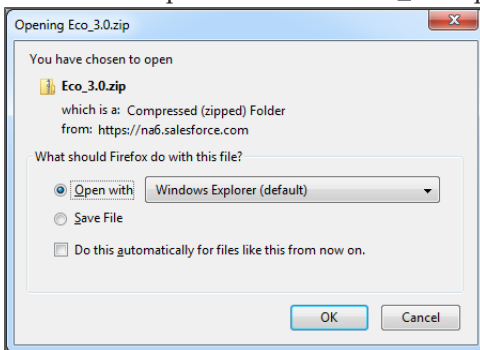
This document provides instructions on downloading the installer for the latest Eco Software, upgrading the software on your netbook, upgrading the firmware on your Eco instrument, and temporarily disabling and reactivating a McAfee firewall, if required.

Downloading the Eco Software

- 1 Follow the “Eco v3.0 Download” link in the email you received from Illumina or found on the Support tab for the Eco Real-Time PCR System on the Illumina web site (<http://www.illumina.com/systems/ecoqpcr.ilmn>).
- 2 When you arrive at the landing page where the Eco software installer is located, click the **Download** button in the lower left corner of the screen.



- 3 Click **OK** to open or save the Eco_3.0.zip file.



- 4 Move the Eco_3.0.zip file to your desired location.



TIP

To install the Eco software on your netbook or other computers, move the Eco_v3.0.zip folder onto a USB drive.

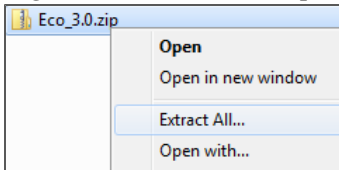
Upgrading the Eco Software

Before starting your software upgrade:

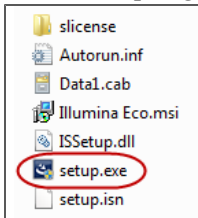
- ▶ Close the Eco software on the netbook computer.
- ▶ Make sure the power cables and Ethernet cables are properly connected.
- ▶ Make sure the Eco instrument is turned on.

Steps to Upgrade your Eco Software and Firmware

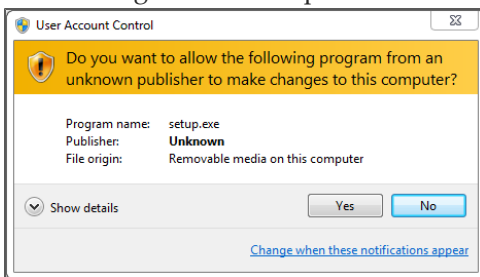
- 1 Right-click the Eco_3.0.zip file and select **Extract All**.



- 2 Open the decompressed Eco_3.0 folder and double-click **setup.exe**. It could take up to one minute for the setup program to launch. Please refrain from attempting to launch the setup program multiple times.



- 3 Select **Yes** when the User Account Control dialog box prompts for permission to make changes to the computer.



- 4 Follow the prompts in the software installation wizard to install the latest Eco software onto the netbook.
- 5 When the installation is complete, double-click the Eco desktop icon to open the Eco Software v3.0.

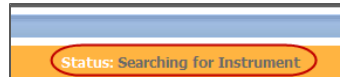
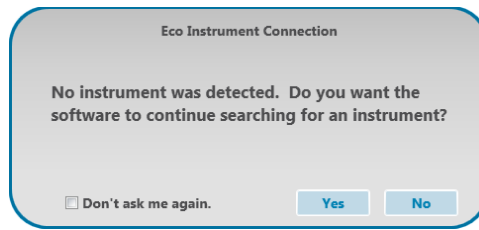


After the upgrade, the Eco Software will need to re-establish a connection to the instrument.

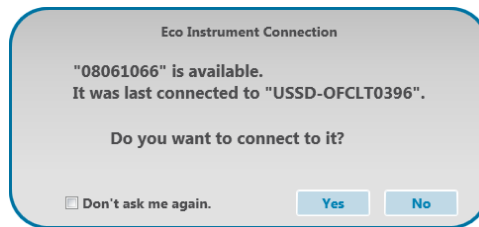
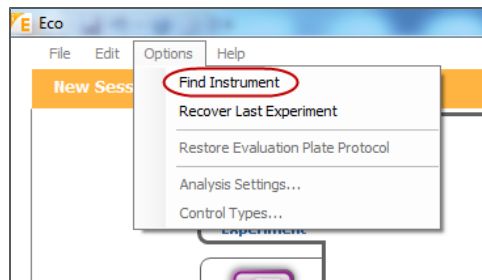


NOTE

The software might not be able to auto-connect the first time you start the software after the v3.0 upgrade. If a dialog box prompts that the instrument is not found, click **Yes** to find the instrument. The status bar shows "Searching for Instrument".

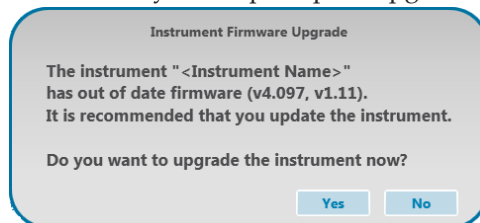


If the software does not establish a connection within a few minutes, select **Options | Find Instrument** to reconnect to the instrument manually. Once the connection to your Eco instrument is identified, click **Yes** to connect.



Upon connection, the software will detect whether the instrument firmware also needs to be updated.

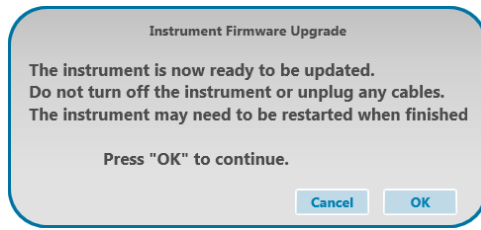
- 6 Click **Yes** if you are prompted upgrade the firmware.



NOTE

The firmware versions detected on your instrument will vary from those shown in this example.

- 7 Read the instructions in the upgrade dialog box, and then press **OK** to begin the firmware upgrade.

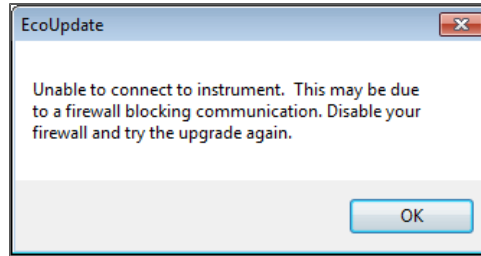


The firmware upgrade could take up to five minutes to complete.

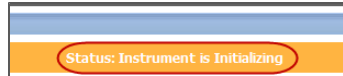


NOTE

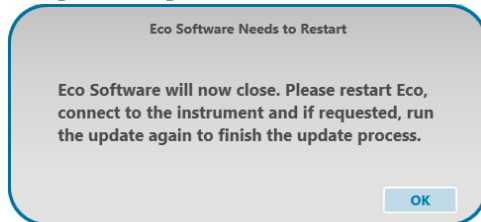
The firmware upgrade might require you to temporarily disable the McAfee Firewall. If the following dialog box opens, disable the firewall, as described in *Disabling the McAfee Firewall* on page 9, before continuing:



When the firmware upgrade is complete, the instrument will automatically restart and reinitialize. This process could take up to 20 minutes to complete.



The following dialog box will open, prompting you to restart the Eco Software to complete the process.



NOTE

The sentence beginning "Please restart Eco" in this dialog box is referring to the Eco Software. You do not need to restart the Eco instrument again at this time, because it was already restarted and reinitialized as part of the firmware upgrade.

- 8 Click **OK** to close the Eco Software, then double-click the Eco desktop icon to re-open the Eco Software.

A connection to the instrument should be re-established automatically. If the software fails to auto-connect, follow instructions in step 6 of this protocol to manually establish the connection.



NOTE

If the status bar shows "Instrument is Initializing", a dialog box opens, warning not to insert your plate until after initialization has completed. This process could take up to 20 minutes to complete.

When the status bar shows "Instrument Ready", you may proceed with your experiments.



- 9 If you had to disable your firewall in step 7, you can reactivate the firewall now, as described in *Disabling the McAfee Firewall* on page 9.

Disabling the McAfee Firewall

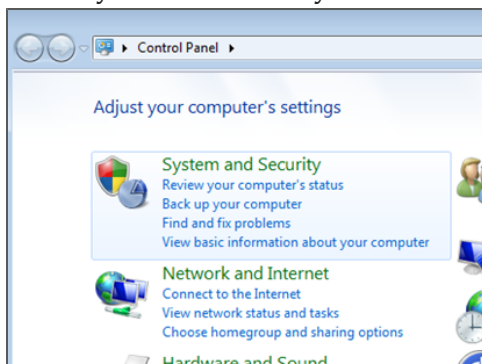
The Eco v3.0 firmware upgrade might require you to temporarily disable the McAfee firewall on your netbook.

Only complete the steps in this section if:

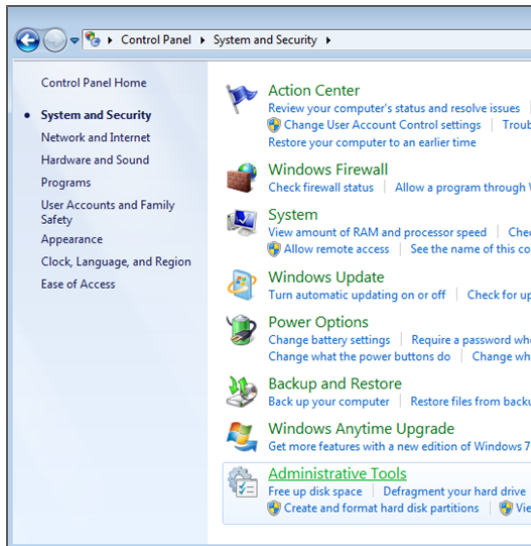
- ▶ The Eco Software on the netbook has been upgraded to v3.0 software.
- ▶ The netbook is connected to the Eco instrument.
- ▶ The EcoUpdate dialog box opened, prompting you to disable your firewall and try again.

Steps to Disable your Firewall

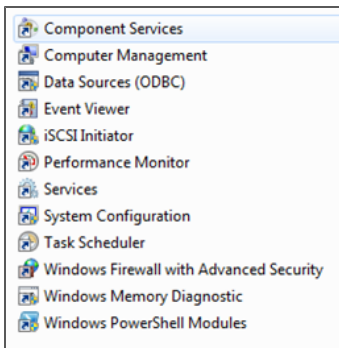
- 1 From the Windows **Start** menu, select **Control Panel**.
- 2 Select **System and Security**.



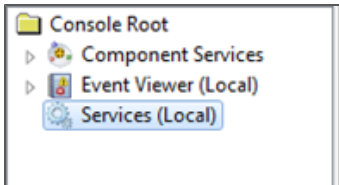
- 3 Select **Administrative Tools**.



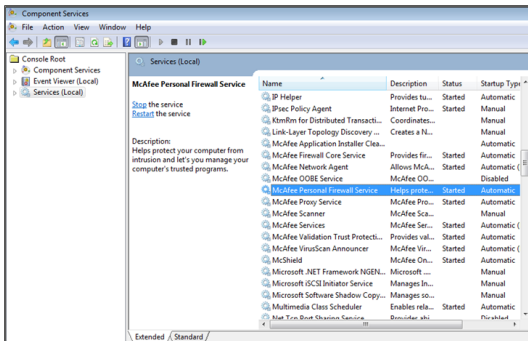
- 4 Select **Component Services**.



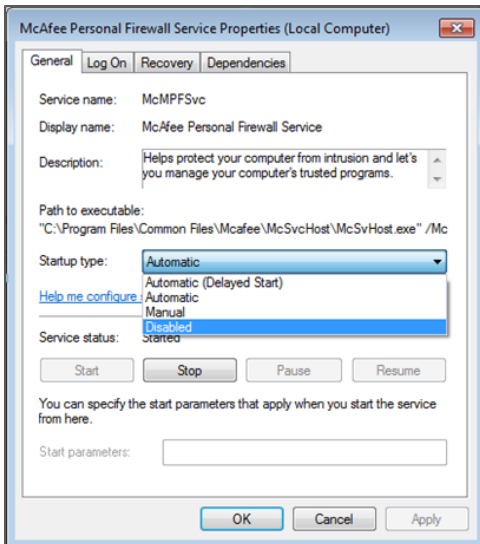
5 Select **Services (Local)**.



6 Double-click **McAfee Personal Firewall Service**.



The McAfee Personal Firewall Service Properties dialog box opens.



7 From the Startup type drop-down menu, select **Disabled**.

8 Click **Stop**.

9 Click **OK** to temporarily disable the firewall.

- 10 Return to step 6 in *Upgrading the Eco Software* on page 5.

Steps to Reactivate your Firewall

After completing the firmware upgrade, restart the anti-virus firewall.

- 1 Return to the McAfee Personal Firewall Service Properties dialog box, as described in steps 1 through 6 above.
- 2 From the Startup type drop-down menu, select **Automatic**.
- 3 Click **Start**.
- 4 Click **OK** to reactivate the firewall.

Notes

Technical Assistance

For technical assistance, contact Illumina Customer Support.

Table 1 Illumina General Contact Information

Illumina Website	http://www.illumina.com
Email	techsupport@illumina.com

Table 2 Illumina Customer Support Telephone Numbers

Region	Contact Number
North America toll-free	1.800.809.ILMN (1.800.809.4566)
United Kingdom toll-free	0800.917.0041
Germany toll-free	0800.180.8994
Netherlands toll-free	0800.0223859
France toll-free	0800.911850
Other European time zones	+44.1799.534000
Other regions and locations	1.858.202.ILMN (1.858.202.4566)

MSDSs

Material safety data sheets (MSDSs) are available on the Illumina website at <http://www.illumina.com/msds>.

Product Documentation

If you require additional product documentation, you can obtain PDFs from the Illumina website. Go to <http://www.illumina.com/support/documentation.ilmn>. When you click on a link, you will be asked to log in to iCom. After you log in, you can view or save the PDF. To register for an iCom account, please visit <https://icom.illumina.com/Account/Register>.

Illumina, Inc.
9885 Towne Centre Drive
San Diego, CA 92121-1975
+1.800.809.ILMN (4566)
+1.858.202.4566 (outside North America) techsupport@illumina.com
www.illumina.com